

Edp-c2 technical data

Input supply : 24 vdc , 12 – 24 vdc or 36 vdc
6 amps peak 2 amps run

Output to field : 0 – 300 vdc up to 5 amps.

Output to magnet : 0 – 300 vdc programmable
50 , 100 , 200 amps model all are upgradable
Overload and Short protection

Temperature : -40 C to 60 C inside box drop 15% power at 50 deg. C
And still working until 60 deg C

Duty cycle : 100 % duty until 50 deg C inside box

Digital input : Programmable ,voltage input +24 vdc 60 ma from S+
Sw- = Command input Twin with Boost / Unload
Twin with out Boost
puls

In = Command input - Nul ,Drop NC , Drop NO

Digital output : +24 vdc 200 ma max Programmable
OUT = Hydraulic valve with off delay load=trigger
Message on display
Time out
Load / Unload
Twin = Load / Unload and Message on
display
VO= Hydraulic valve with off delay load=trigger

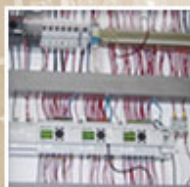
Reel time display - Armature volt ,armature amps,field volt ,pwm .
- Input / output
- Isolation with code 65

Avantage

- Installation help
 - . connection reversing message
 - . input test with display pixel like a test lamp
 - . automatic ajustement
- Multipl langage display
- Alphanumeric Display for trouble message and test lamp
- 20 Trouble memory with number memorised like max. amps. , max. volt for technician help
- Isolation test at each start up with alarm message and readout
- Amps protection programmable 15 to max amps at all unit ex. 31,32,33,amps
- Power off discharge circuit for security
- Arc proof when magnet is disconnected in load cycle
- Variation rpm compensation in less than 1 sec
- Volt curve up and down is good to increase life of equipement.
- No electric arc to protect the magnet isolation
- Watch dog CPU supervised can reset CPU if eratic working witout drop magnet load.
- Maximum load time programmable 1 to 10 minutes 0 = nul or infini
At end of timer the magnet drop verry slowly until load command.
- Capacity of 0 to 200 amps in one small size box
- Upgradable up to 200 amps and more.
- Easy retro fit



RÉPARATION • RECHERCHE • ÉLECTROMÉCANIQUE • CONCEPTION DE MACHINERIE



⋮ Accueil

⋮ Présentation

⋮ Produits

⋮ Services et expertises

⋮ Galerie

⋮ Librairie

⋮ Coordonnées

Liste d'envoi

Inscrivez-vous maintenant!



Librairie



Guide d'utilisations EDP-C2 | 26 Mai 09

Pour visualiser un document PDF, vous devez posséder Adobe Reader. Si vous n'avez pas ce logiciel, vous pouvez l'obtenir gratuitement en cliquant sur le lien télécharger maintenant.

